

# **Introduction**

## **Plastic Molds for Packaging Industry**

**Jaewoo SF Corporation  
Jaewoo Plastics Co., Ltd**

# Business application for Packaging Industry

- . Injection Molds
- . **Injection Molds with IMC**
- . **Injection Molds with IML**
- . Injection Molds with two colors
- . Injection Blow Molds (IBM)
- . Extrusion Blow Molds (EBM)
- . PET/ISB Molds
  
- . **Personal care**
- . **Cosmetic parts**
- . **Pharmaceutical/Nutraceutical**
- . **Food & Beverage**
- . **Pumps ( airless, lotion, foam)**
- . **Stationary (writing instrument)**
- . **Medical part (disposable products)**
- . **Engineering packaging (IMD part)**



# **Projects since last 10 years :**

**Supply various molders to India, Russia, Mexico, USA, KSA, EU, Egypt, South Africa and Weener group & more MNC since last 22 years :**

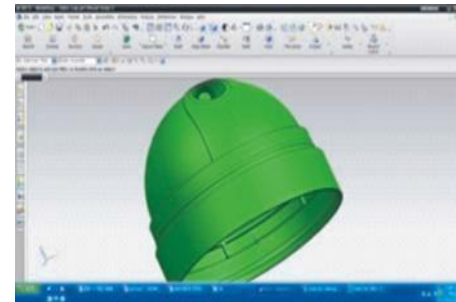
- > Spout Cap & Base, 20/24/28ml Oil cap, Powder Caps, Alpha FTC 15/28mm, Dome Caps, and A'ssy machines .**
- > Rethink Cap 2/3mm Pin, Tamper Evident Cap, Listerine Caps(250/500ml, etc..)**
- > Clean & Clean Cap, Savlon Cap, 20/24/28mm FTC & Ring.**
- > IBM : JBP 30, 50,100g, Roll on 65ml, 50ml, 250ml & Bio 50ml**
- > Dispense Pump, Foam Pump, Trigger Molds & Assy machines.**
- > 2 color Oval FTC projects ( 10 sets of Molds )**
- > 12 Cavity Round & Oval FTC with IMC.**
- > Factory Automation and Tool Room machinery .**

**RAMAX, Mold Max and Stainless Steel / STAVAX for Cores & Inserts.  
Cavity & Bases for P-20/KP4M/\$55C with chrome plating.  
Hot runner system ( Mold master, Husky & Korea made )**

# Mold Building Process

## Modeling

Improving quality by Advanced Engineering skills based on latest CAD / CAM programs.



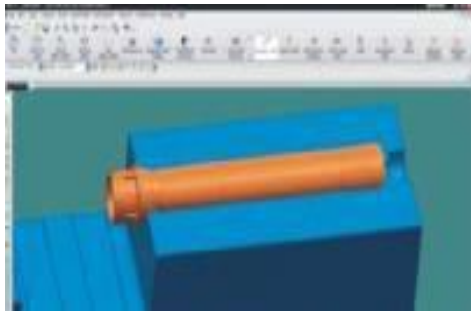
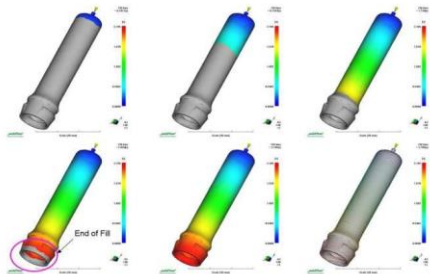
# Mold Building Process

## Mold Design & Pilot Test



**Auto CAD, CADKEY, 3D Mold Design(Unigraphics)**

**Each Part Section Design, and assembly each Part**



### Pilot Test

**Ready to provide the Pilot Samples for evaluations of all features, functions, quality and approval the Samples for Production Mold building.**

# Mold Building Process

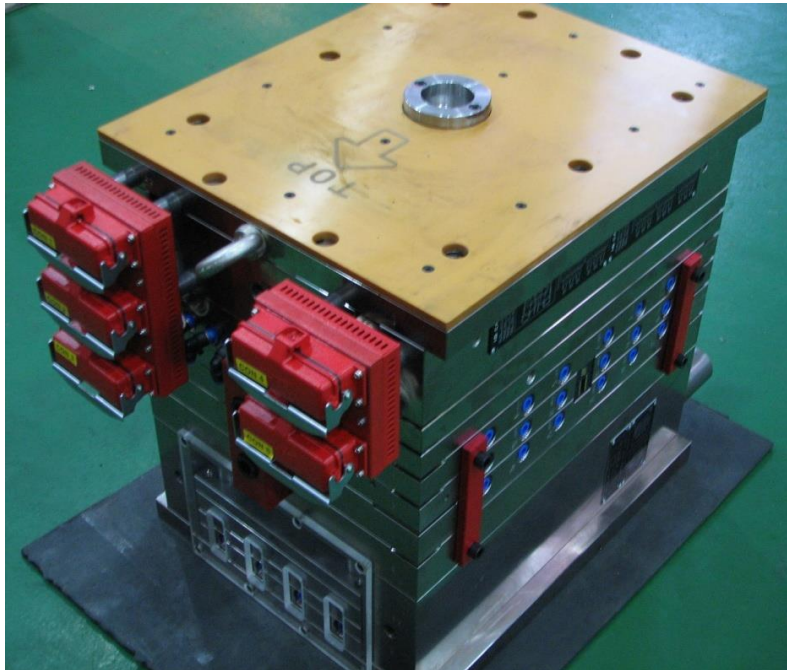


**CAD / CAM – NC Milling – General Millings – EDM – soft Grindings – Lathe – Wire cut – Gun Drill – Drilling/Tapping – Engraving – Sanding - Heat treatment – Lapping – Polishing – Assembly – Trial Tests T1/T2 - Approval .**



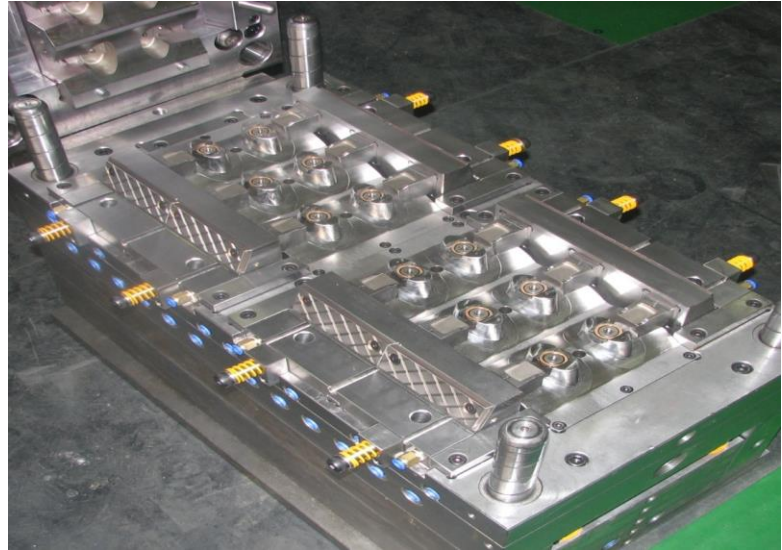
# Injection Molds

Plastic Molds for Caps, Closures, Lids, Covers, Plugs, Containers...



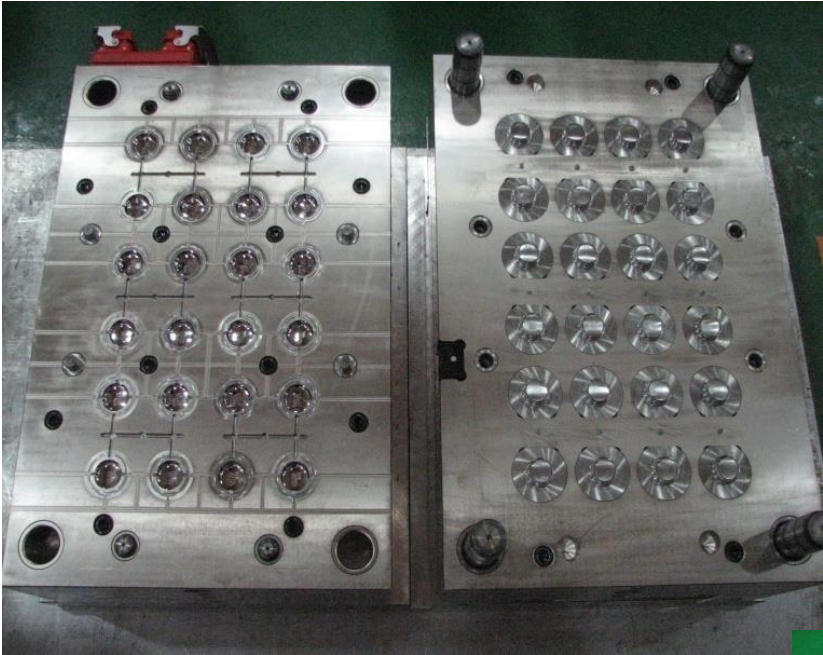


## □ Molds & Samples

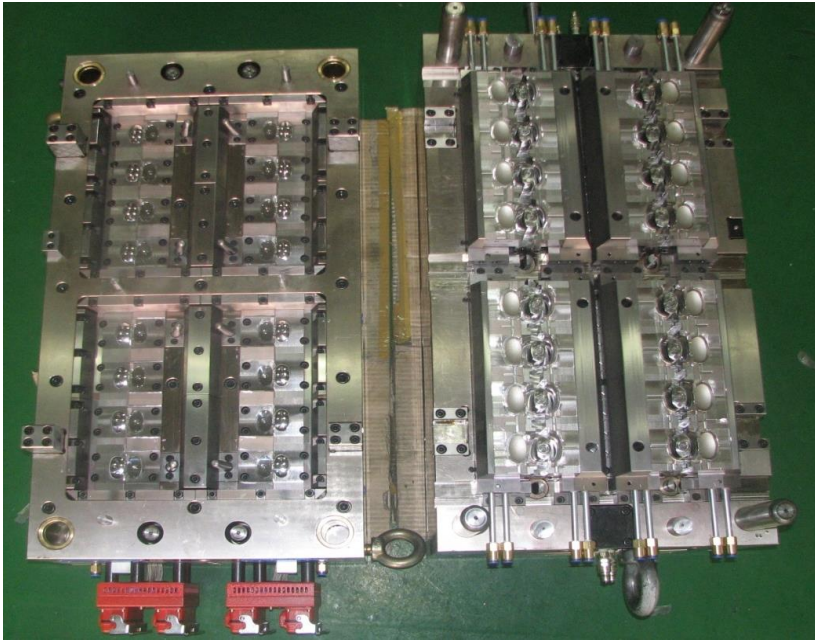




# □ Molds & Samples



## ☐ Molds & Samples





# ☐ Samples



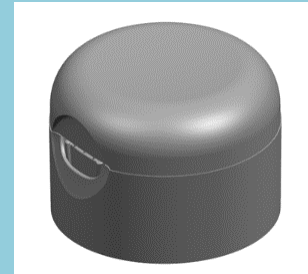
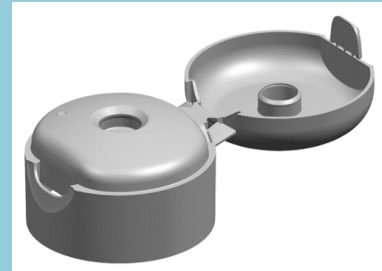




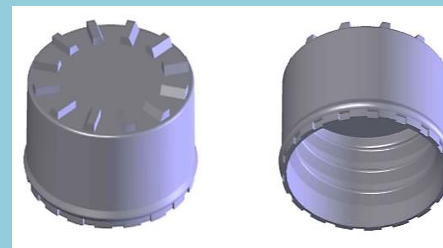
☐ **Samples for reference “Tear off, Snap Fit & CRC”**



**Tear Off design FTC**



**Snap Fit design FTC  
with Tamper Evident**

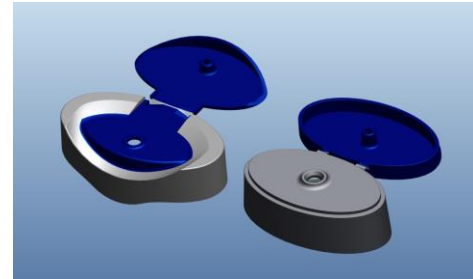
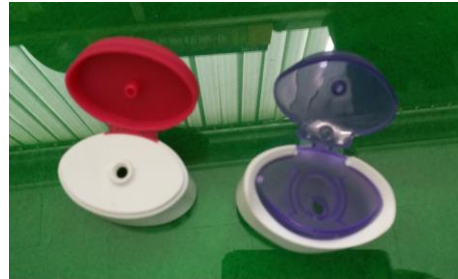


**Safety design 2 Cap ( CRC )**

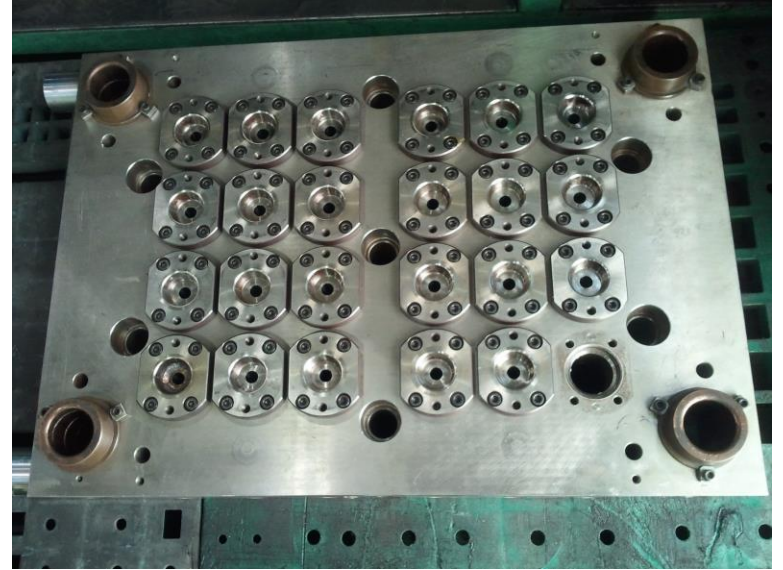
**A'ssy machine available**



□ **Samples for reference “Bi Injection Cap”**

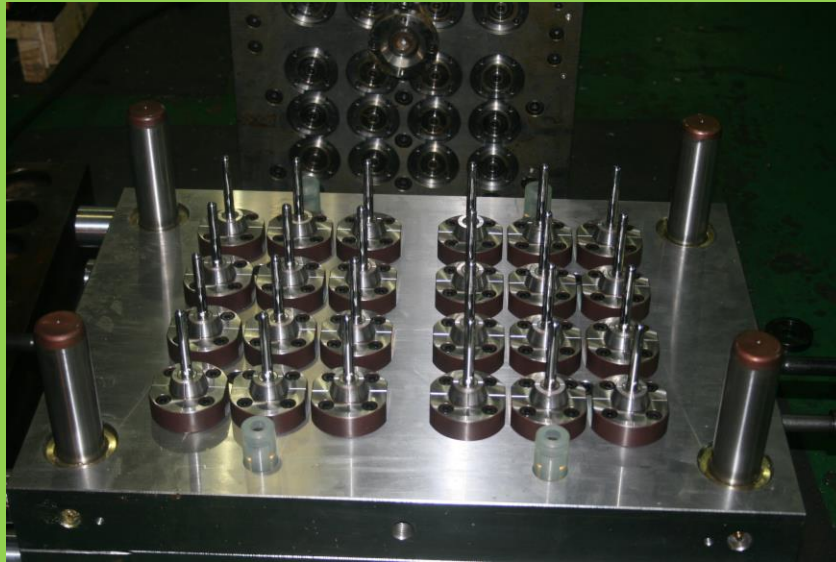


# Medical Disposable Parts & Molds





# Medical Disposable Parts & Molds



VBCT (Vacuum Blood Collection Tube)

Syringes (All size)

IV Infusion

IV Catheter (24G~16G)

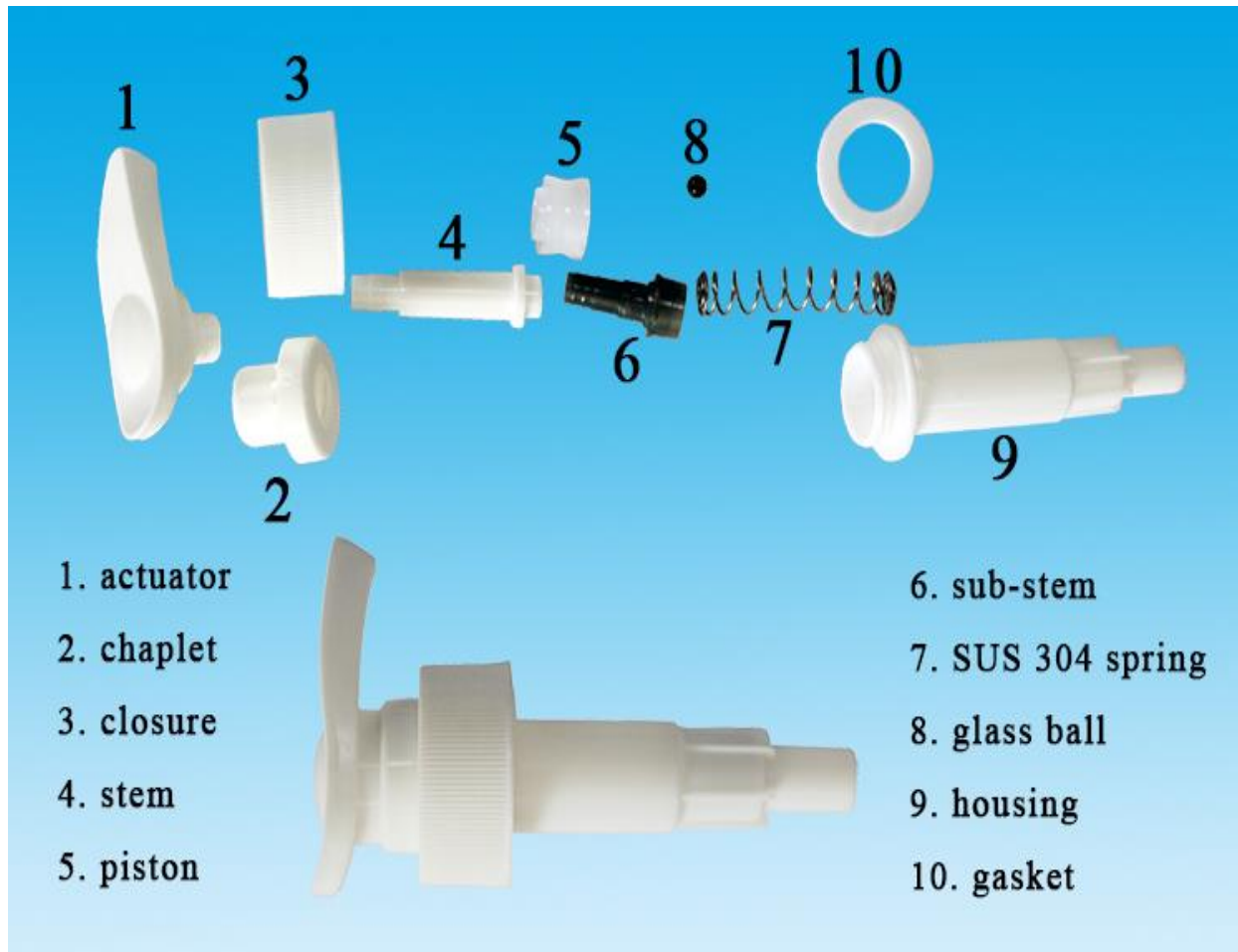
Electron Accelerator Sterilization for VBCT, etc



Tube Molds

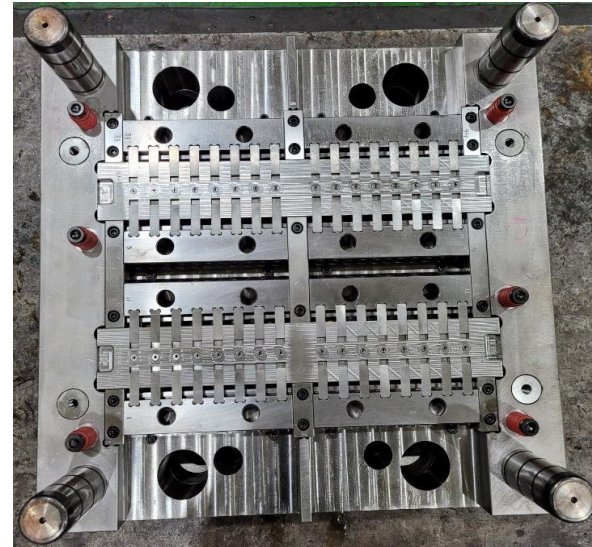
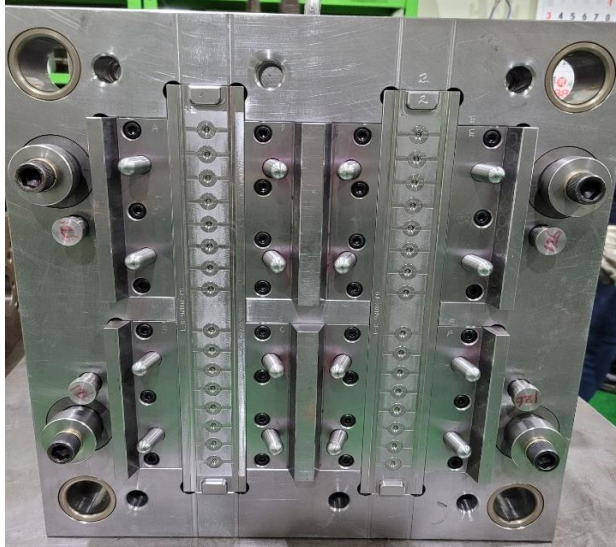
# Pump Parts for Molds

POP OFF Type, ON OFF Type / Full Auto & Semi Auto 0.3~1cc/2cc/3cc



# Pump Parts & Molds

## ON OFF Type Sub Stem Part Molds





# Pump Parts

Treatment Pump / Airless Pump 0.3cc/0.6cc/1.0cc



Treatment Pump / Airless Pump



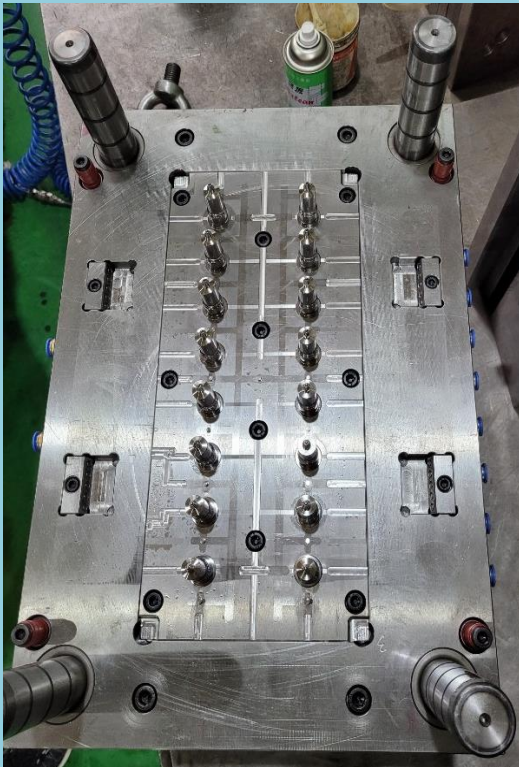
Treatment Pumps



Airless Pumps

# Pump Part Molds

ON OFF Type Housing Pump Molds

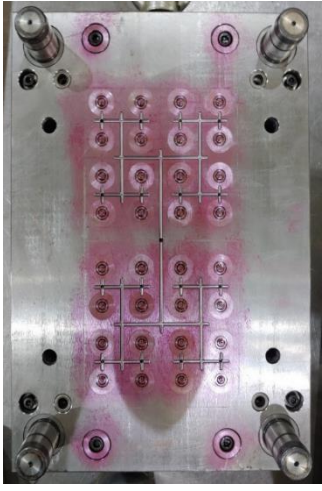




# Molds Pictures

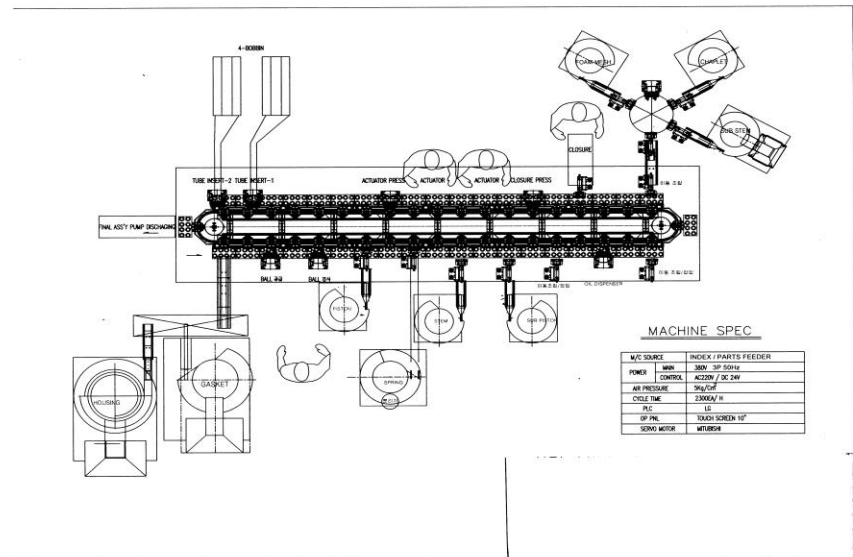
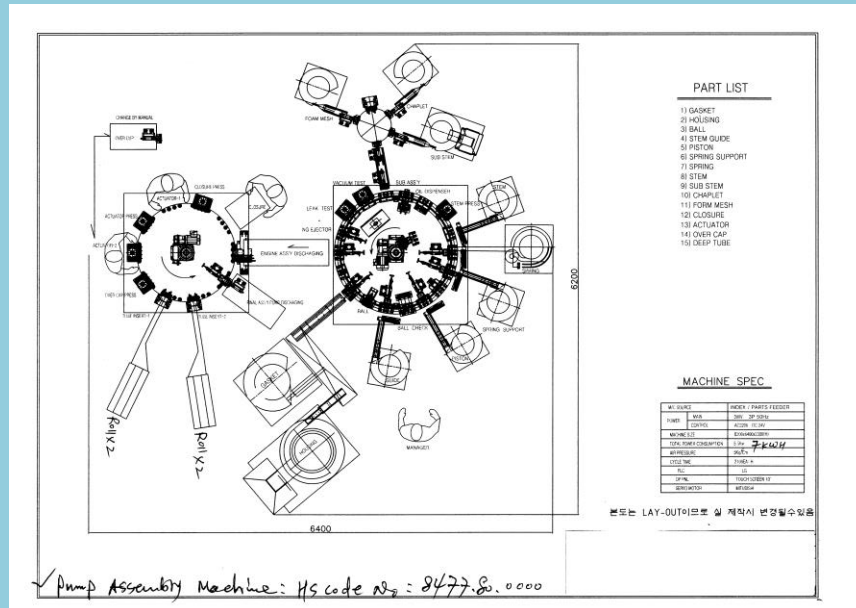


**ON OFF Type Stem Part Molds**



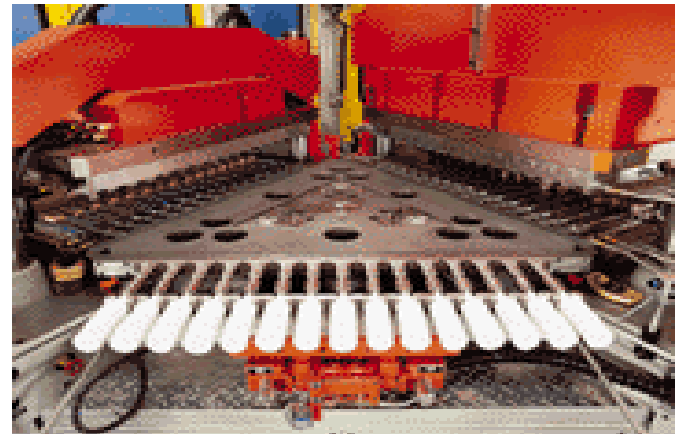
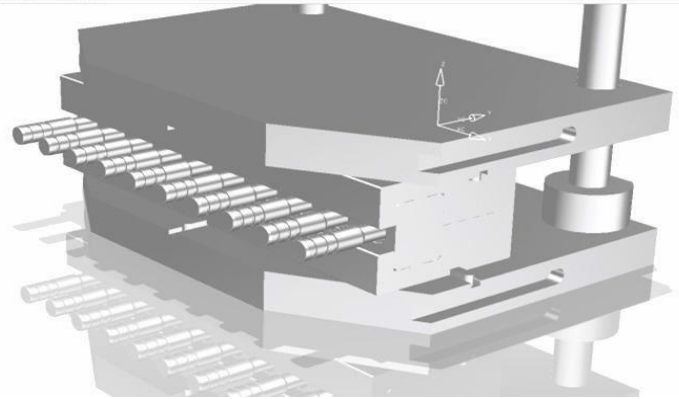
**ON OFF Type Chaplet Part Molds**

# Pump assembly machine Lay outs



# Injection Blow Mold

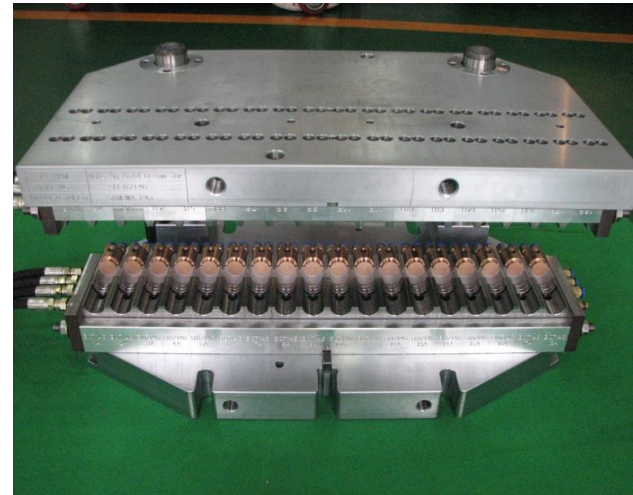
- . Specialized in Injection Blow Molds.
- . Deal with several kinds of materials, HDPE, PE, PP etc which will apply to wide variety of Plastic Packers.





# Injection Blow Mold

Plastic Bottle Molds for Cosmetics,  
Pharmacy, Agricultural Chemicals,  
Food & Beverage.



□ ***IBM Bottles Samples for reference***



□ ***Samples for reference ( IBM Jars & Bottles )***



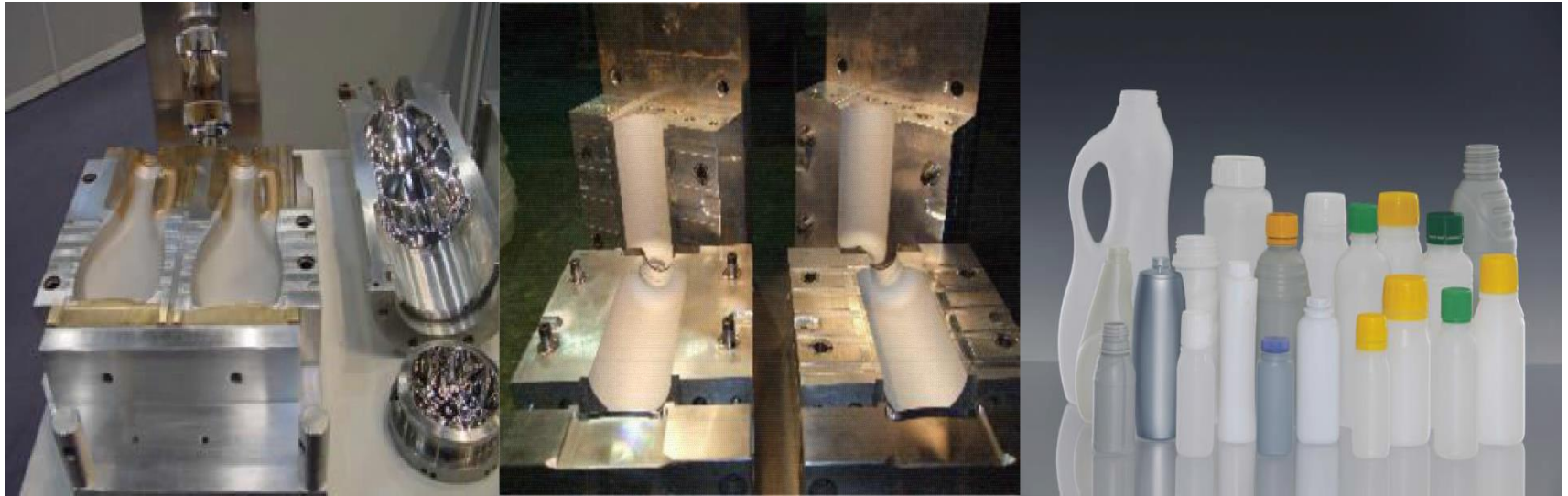
□ ***IBM Jar & Bottle Samples for “Pharmaceutical”***





# Extrusion Blow Mold

Plastic Molds for Detergent, Shampoo,  
Agricultural Chemical Container





□ **Samples for reference “EBM” products**



**Transparent Bottle PET-G, Tritan**



**Cosmetic Small Bottles**



**3 Layer Oval Bottles-Sun Cream**



**6 Layer Bottles-Sauce**

☐ **Samples for reference “EBM” products**



**Shampoo & Cleanser Bottles**



**IML Bottles**



**View Strip Containers Engine Oil**

□ **Samples for reference “EBM” all products**



**Extrusion Blow Molding machine - Full Electric Models  
ES400/500/600/700/800/900 Series, which are available  
to supply with competitive terms along with all Molds.**



# All Electric EBM Machine “SPEEDEX” along with Blow Molds

**ES** SERIES

All-Electric Blow Molding Machine

- Energy Savings
- Multi-Functional Controller
- Noise Minimization
- Extensibility
- Productivity Optimization
- Hardware Optimization
- Clean Environment

2-Station · 1~8 Cavity



Angular Neck Bottle



In Mold Labeling System

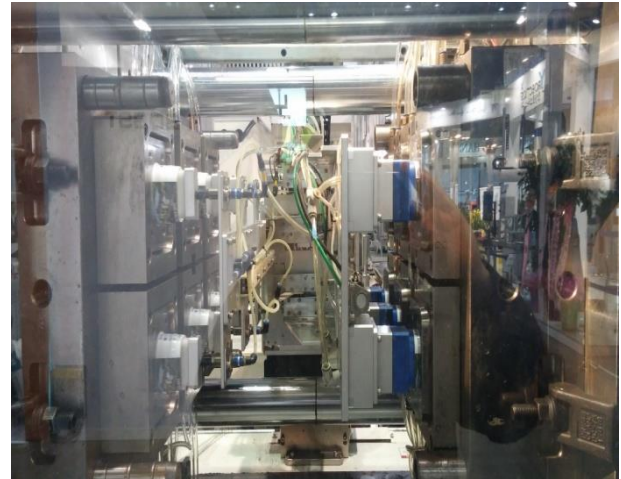
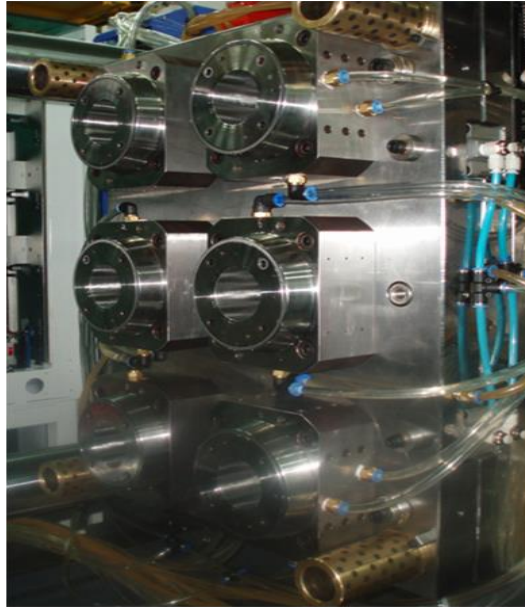


**400/500/600/700/800/900 Series**

- Energy saving 30%
- Noise minimization
- Clean environment
- Hardware optimization
- Multi functional control
- Max. productivity



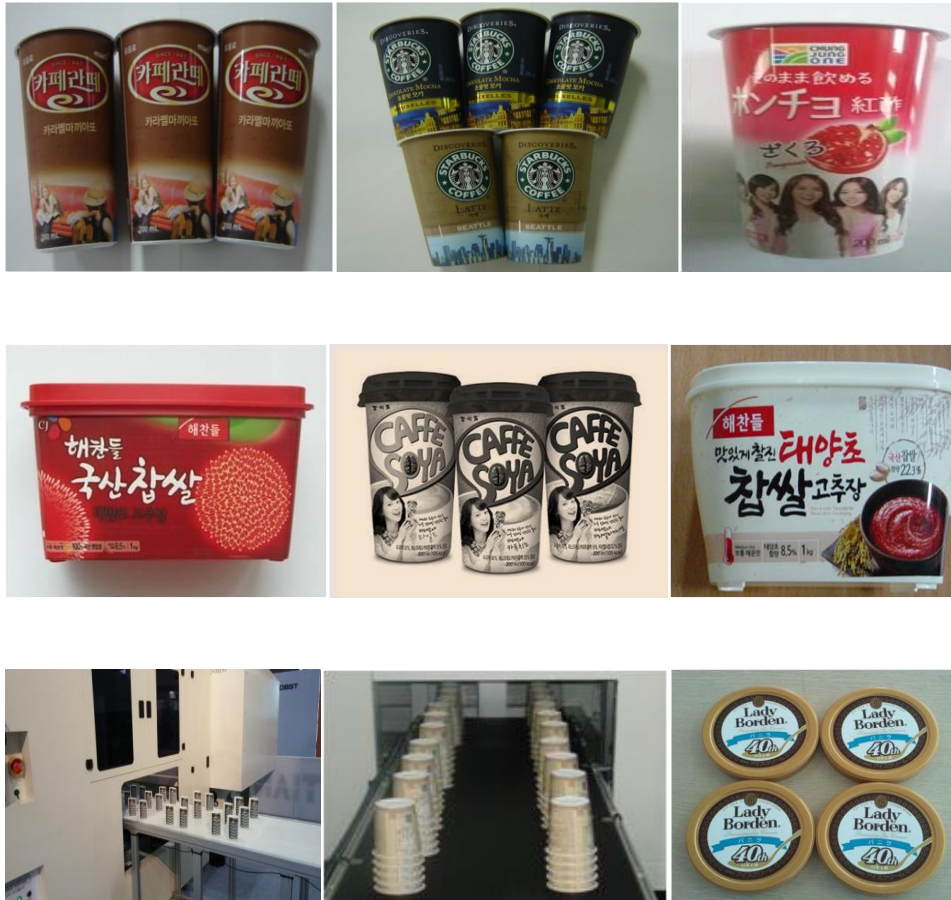
# □ “ IML Molds “ by Injection Technology



# ☐ Samples for reference “ IML Products “

## IML Products and Molds

2015. Jan



Wall thickness : 0.4mm + 0.05mm film  
Jaewoo Corporation Mold Div. Korea

# Writing Instruments Molds





# Writing Instrument Mold part





# Medical Parts Molds & Assembly plant

## 1. Medical parts for Turnkey Plant :

- > Syringe Molds, Plant and Projects
- > Vacuum Blood collection tube Molds & assembly Plant
- > IV Catheter plant & IV Infusion set Plant

## 2. Bio & Environment systems :

- > Sterilization ( EO Gas : Syringes, etc) ,
- > **E Beam system for VBCT, and**  
New application : Medical parts, Food, Semi conduct, Cable, etc



## □ ***Our Strength***

- . Develop a critical design & Molds, under 25 years valuable Experiences and Technology/Know.**
- . Latest R&D Design capability, Facilities and Skilled Engineers.**
- . Competitiveness Price, Quality and Delivery.**
- . Latest Machining program and Test equipment .**
- . Quick communication and solutions against any issues & questions.**

# ***Design Capabilities***

## 1. 3D CAD (Design S/W)

- . PRO-E
- . CATIA
- . UNI GRAPHICS

## 2. 2D AUTO CAD

## 3. 2D CADKEY

## 4. CAM S/W

- . CATIA
- . CAMTOOL
- . WORK NC
- . NCG (MS)

## 5. CAE S/W

- . Mold Flow
- . I-DEAS

## 6. DNC NC Brain

## Key Facility for manufacturing

No	Description	Maker/Origin	Q'ty	Remarks
1	CNC Machinning Center	DooSanmte / Korea	2	1800x700(10,000rpm)
2	CNC Machinning Center	DooSanmte / Korea	3	1600x600(6,000rpm)
3	CNC Machinning Center	DooSanmte / Korea	2	1000x500(20,000rpm)
4	Complex Milling machine	Micron/Swiss	2	1000x800(24,000rpm)
5	CNC Milling machine	Hwacheon / Korea	2	1050x650x650
6	Lathe	DooSanmte / Korea	4	Φ360
7	CNC Lathe	Hwacheon / Korea	3	
8	Radial Drilling machine	DooSanmte / Korea	2	2300X880
9	Grinding machine	YGS-52B / Korea	2	450x200
10	Grinding machine	KHG-450R / Korea	2	450x200
11	Milling machine	Hwacheon / Korea	4	300x1100
12	EDM machine	Creator / Korea	4	400x700
13	CNC EDM machine	Yooil / Korea	2	2000x1000x1000
14				
15				



## Key Facility for Inspection/ Test

No	Description	Spec	Q'ty	Maker
1	3D Coordinate Measurement M/C	500x400x400	2	MITUTOYO
2	Profile Projector	PJ-A3000	2	MITUTOYO
3	Digital suction Meter	50kgf	4	
4	Block Gauge	103	2	MITUTOYO
5	O/D Micro Meter	75 ~ 100	1	MITUTOYO
6	Digital V/C	0 ~ 600mm	2	MITUTOYO
7	Pin Gauge	Q2.5 ~Q3.0	2	
8	Digital V/C	0 ~300mm	1	MITUTOYO
9	Digital V/C	0 ~600mm	2	MITUTOYO
10	Digital Indicator	0 ~50mm	1	MITUTOYO
11	O/D Micro Meter	0~25,25~50,50~75mm	3	MITUTOYO
12	Dial Height Gauge	0 ~600m	2	MITUTOYO
13	Dial Height Gauge	0 ~300m	2	MITUTOYO
14	Torque Tester	60kgf	2	

□ ***CNC machining tooling***



# Cosmetic Parts : Air Cushion Products

**We can supply all kinds of design for packaging of this Products.**





# Air Cushion Products

**We can supply all kinds of design for packaging of this Products.  
Slim design, latest popular in the market**





# Square Lip Stick and Lip Glossy

We can supply the same design for packaging and also supply complete products.



# Color eye shadow palette

There are many other latest Design for customers





# Major Customers

AKOR EPK Group Delfin FABERIC Russia

L'ORÉAL		MONSANTO 	Johnson-Johnson
Nestlé		CJ 	KOMAX 
Ranbaxy CIPLA		Cope Allman Jaycare 	emami 
Silveoak Olifilme	SSF SSF PLASTICS India Private Limited 	marico 	NAMYANG 
MPACT Mondi Cap	PARAS 	東西食品 DONGSUH 	PARIS BAGUETTE 
NatPack	syngenta 	Johnson A FAMILY COMPANY UNE ENTREPRISE FAMILIALE 	WEENER 
gsk 	Yakult 	ARBONNE 	AVON the company for women 

AG PP P & G Trico Brown Pelikan Mexico Gromin Luxor India JABIL

# Contacts

**JAEWOO SF CORPORATION .**

**JAEWOO GREEN PLASTICS .**

**Contact Person : Mr. I.S.Sung**  
**E-mail : [jaewoocorp@gmail.com](mailto:jaewoocorp@gmail.com)**

**Mobile : 82-10-2938-3807 ( WhatsApp, Katalak )**

**Tel : 82-2-2635-3807**

**Fax : 82-2-2635-3808**

**[www.jaewoocorp.com](http://www.jaewoocorp.com)**

**Address : Head office ( Factory in Korea )**  
**#102, 13-dong Namsan Town APT building Dasan**  
**Ro 32 Jung Gu, Seoul Korea. Zip code 04 595.**